

Atlas with surveillance data for Dallington; up to May 2014

Introduction

A map on the next page shows the approximate areas represented by the atlases.

The atlases are compiled by reviewing surveillance data for each monitored area in order to distinguish different cats. Each area has multiple feeding stations. Some stations have satellite sub-stations to minimise competition where a large number of cats are present. This also gives shy cats an opportunity to avoid the toms.

Only cats that are still living in the red zone are included in the atlases (except Dal 2 who has been repatriated as this report was being finalised). As cats are trapped and removed from the red zone their entry in the atlas will be modified to make this clear, and the cat will be posted as “found” on Petsonthenet and Trademe, unless clearly feral.

The atlases provide information on the minimum number of cats present in a monitored area. The numbers are conservative because cats of very similar appearance will be grouped together. Also, it is theoretically possible for a cat that is visiting feeding stations to be missed on surveillance if it happens to move between stations in a pattern that avoids cameras that are being rotated around the sites. Finally, it is possible that some cats are relying on hunting and avoid the feeding stations, and other cats, altogether. Due to depopulation of the currently monitored areas it is easy to check whether any cat is currently in a home. Dal 3 is now known to be living with local residents – this was determined by doorknocking with a photograph.

The surveillance images usually allow un-neutered males (referred to as “toms”) to be identified and distinguished from neutered males/females. Also, some neutered males are physically distinct from most females, however the reliability of gender assessment in these cases is reduced, especially in the case of immature cats.

The atlases are a useful resource for checking against lost advertisements and are about to be placed on-line where they will be available to anyone with basic computing skills. Over the weekend of May 10th & 11th 2014 two cats illustrated in the atlases have been matched to current lost advertisements as a result of the atlases being circulated to a redzonecats operative (daughter of Jane Newman). There are currently only 3 operatives in the Newman family, and a single volunteer.

It is possible that some people may decide to sponsor a particular cat seen in the atlases.

Each cat is represented by a still image and a link to youtube video. Additional surveillance images are available on request, for example if a cat resembles a lost pet the owners will find additional material useful for confirmation. In this situation it is recommended that photographs of the lost pet are provided to redzonecats for a detailed analysis.

Unless otherwise stated (cat Dal 1 only) all photos are obtained from automated trail cameras. Very few of the cats in these atlases have been observed directly, due to their reclusive behaviour.



The location of areas represented by the following atlases.

Dallington Run comprises Cats Dal 1 to Dal 17
(16 cats trapped to date, see Table 1 of Appendix 2, plus Cat Dal 2 on 15-5-14, repatriated same day, after being lost 4 months (see next page).

Avon Loop Run comprises Cats AL 1 to AL 18
(15 cats already trapped, see Table 1 of Appendix 2)

River Road site comprises Cats RR 1 to RR 6
(12 cats already trapped, see Table 1 of Appendix 2)

(approx. 40 cats in total still being monitored in field, this is a minimum number, see previous page)



Stiles Place:

Cat Dal 1

<http://youtu.be/zZ9GILbg514>

video same location

Striped tabby, no white, not a tom. Photographed by volunteer using phone. on 11 May 2014. Asking remaining Locksley Ave resident for information.

(Postscript: doorknocking has confirmed this cat is currently homeless)



Stiles Place:

Cat Dal 2

<http://youtu.be/roazUspywWM>

Video same location

Spotted tabby with white chest & feet, not a tom. "Socksie" ID confirmed by owner. Lost 4 months after being moved temporarily to Shirley while earthquake repairs underway. Socksies was trapped on 15 May and is now back home.



Stiles Place:

Cat Dal 3

<http://youtu.be/OqDxtY66VA0>

Video same location

Tortoiseshell long hair thought to belong to remaining Locksley Ave resident.

(Postscript: Doorknocking has confirmed this cat has a current home)



88 Fleete St

Cat Dal 4:

<http://youtu.be/yP61QGqzB6>

[A](#)

Video same location

Spotted tabby tom with large head and (no white). Visits several feeding stations at north end of run. Left ear doesn't match right. Swelling left side of neck . Adequate overall condition, eats well and has good mobility.



Locksley Ave north:

Cat Dal 5

<http://youtu.be/JWUFIgacSis>

Video same location.

Striped tabby long hair no white. Also seen Fleete St south porch, no colour available but appears light – could be ginger, or grey.

12



McBratney's Rd:

Cat Dal 6

<http://youtu.be/RAD48Bymacc>

Video same location

Slim striped tabby with white feet and ?chest, note nuts. Also note the white splotch on left rear leg.



Kim Place (LHS):

Ava Place (RHS):

Cat Dal 6 (again), in colour. NB tail is assymmetric – more stripes on RHS than LHS



McBratney's Rd:

Cat Dal 7

<http://youtu.be/nZgfDw1ago>

Video same location.

Thick striped tabby with white chin and feet, no nuts.

Also seen nearby at Kim Place. No colour available.



Kim Place:

Cat Dal 8

http://youtu.be/Do1en_gQIWM

Video same location

Black tom with many scars. Distinctive Scottish fold type ears.



Kim Place:

Cat Dal 9

<http://youtu.be/W0lLXTSApHM>

Video same location.

Untidy black and white cat, no nuts seen. Also visits Ava Place.



Kim Place:

Cat Dal 10

http://youtu.be/_tDMgeetuco

Video same location

Spotted tabby, white chest and feet has nuts, but is not the slim tom from McBratneys and Kim –different back leg markings (no discrete white splotch on left rear; confirmed on other views). Also, has a brown nose.



Ava Place:

Cat Dal 11

<http://youtu.be/8ubbZN2vETk>

Video same location.

Grey and white spotted cat, not a tom. Also seen at Fleete St South porch. Sarah had a colour shot, confirmed grey.



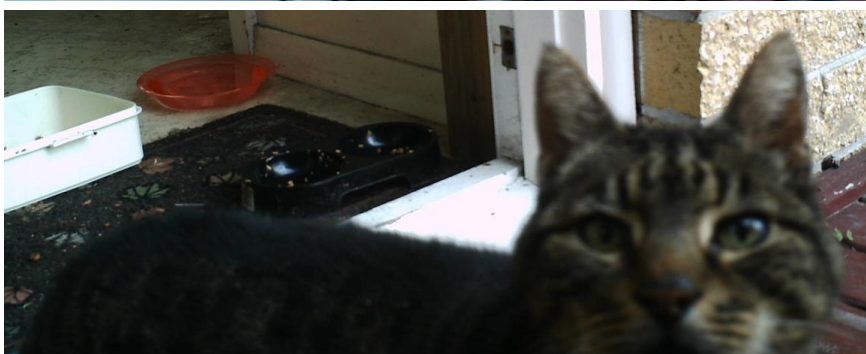
Fleete St South (porch):

Cat Dal 12

<http://youtu.be/J0bLIwfYykg>

Video same location.

Spotty (rear stripey) dark tabby no white no nuts



orn ○ 060°F 016°C 03/30/2014 10:14:24



Fleete St south:

Cat Dal 13

http://youtu.be/0yCEgt8_VDQ

Video same location

Fluffy black or grey,
no colour available.



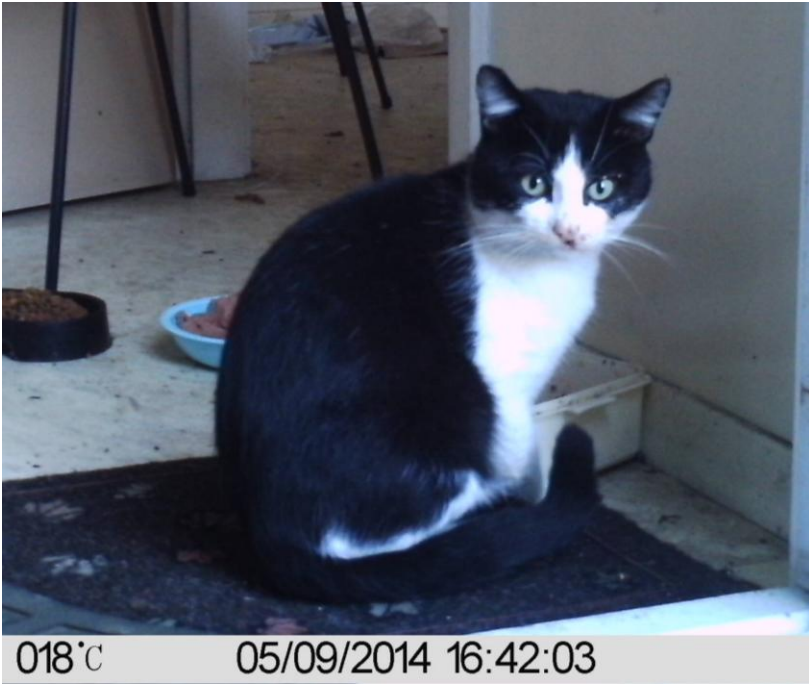
Locksley Ave north:

Cat Dal 14

<http://youtu.be/Lrkab3jES4I>

Video same location

Tabby tom, no white,
has nuts, smaller than
Dal 4.



Fleete St south.

Cat Dal 15.

<http://youtu.be/N1A98REwjcc>

Video same location.

Black and white, nose markings probable mosquito bites, common in the red zone.



Fleet St north garage.

Cat Dal 16.

<http://youtu.be/1wZqNSiukxA>

Video same location.

Black adult probably female, small white patch on chest.



Fleete St North
garage:

Cat Dal 17

[http://youtu.be/LYT
OeF3fBgE](http://youtu.be/LYT
OeF3fBgE)

Video same location.

Half grown black cat,
possible kitten of Dal
16.